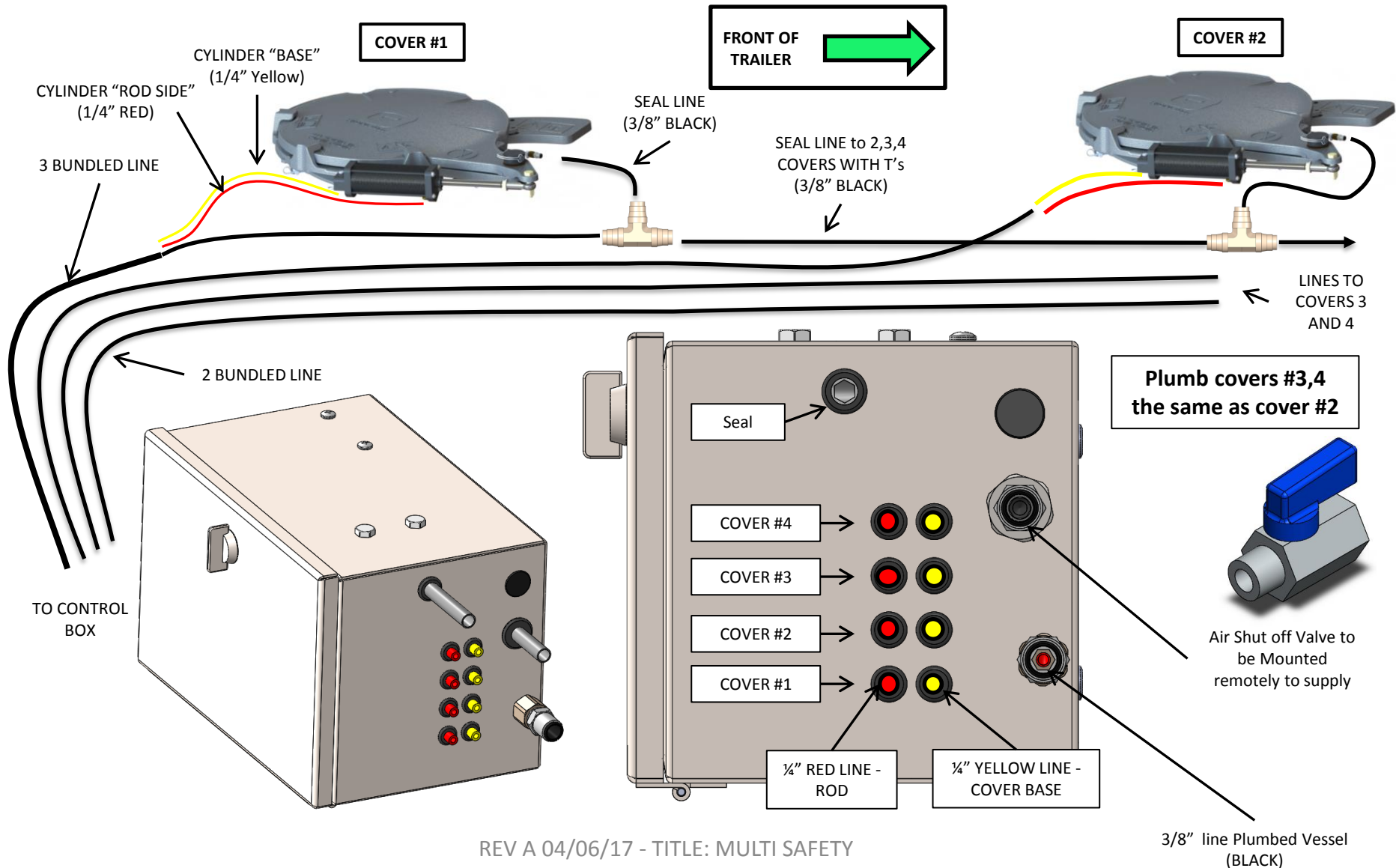
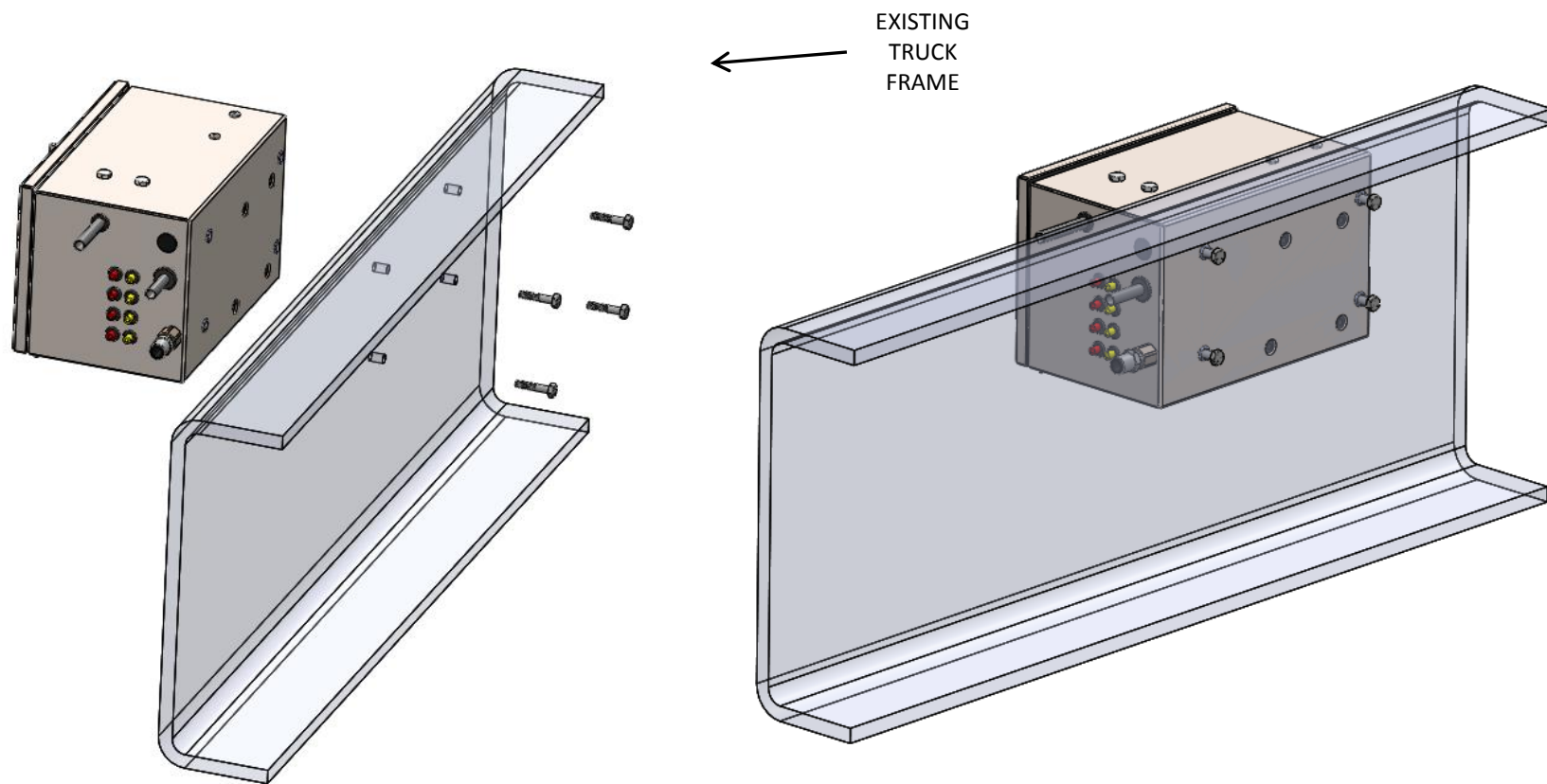


# AIRLINE SCHEMATIC – 103900 - SAFETY (4 COVER INSTALL W/O AIR KNIFE)



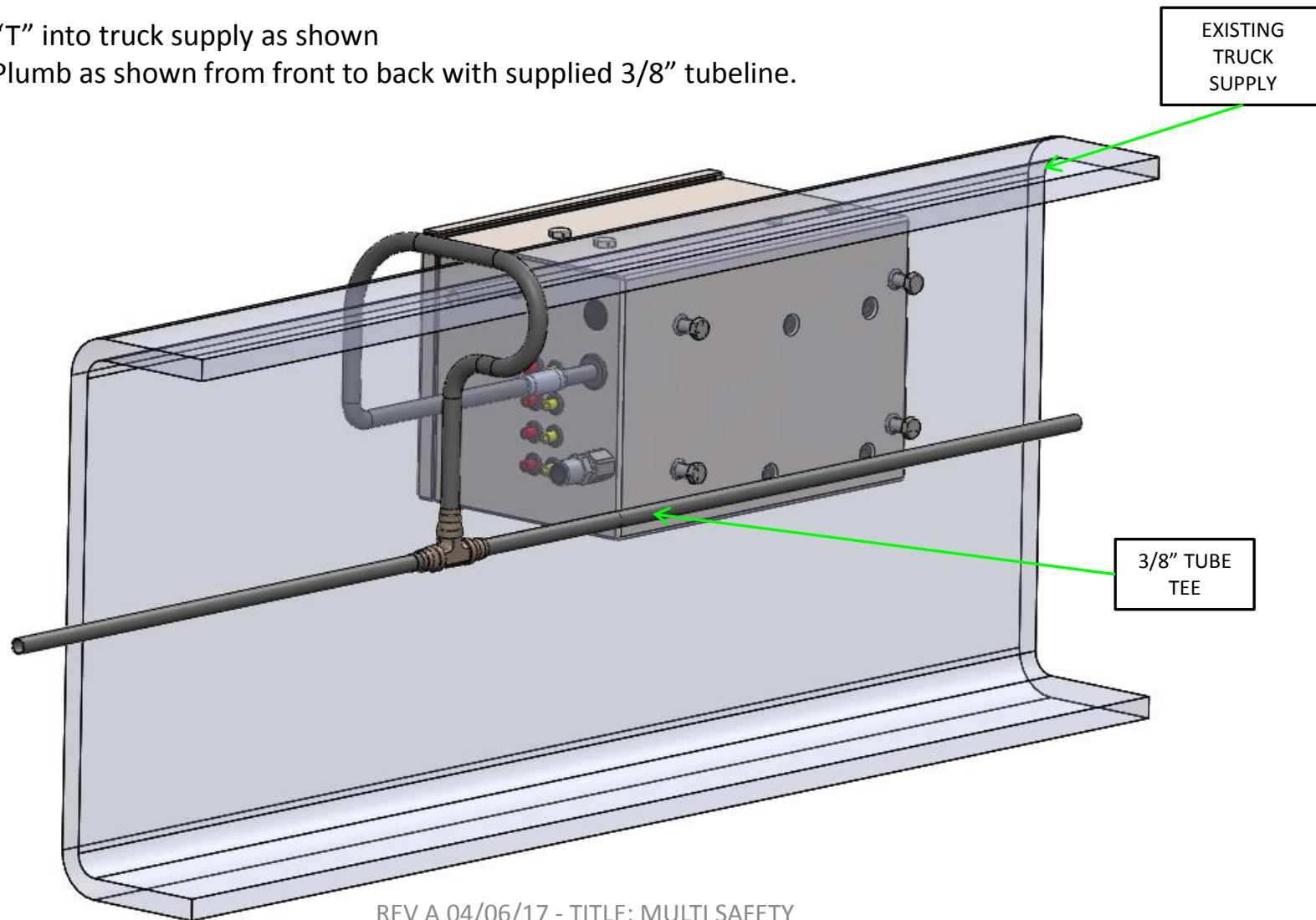
## CONTROL BOX MOUNTING - – 103900 - SAFETY (4 COVER INSTALL W/O AIR KNIFE)

1. Thru drill truck frame rail using provided template
2. Attach as shown and tighten bolts (1/4"-20 x 1-1/4")

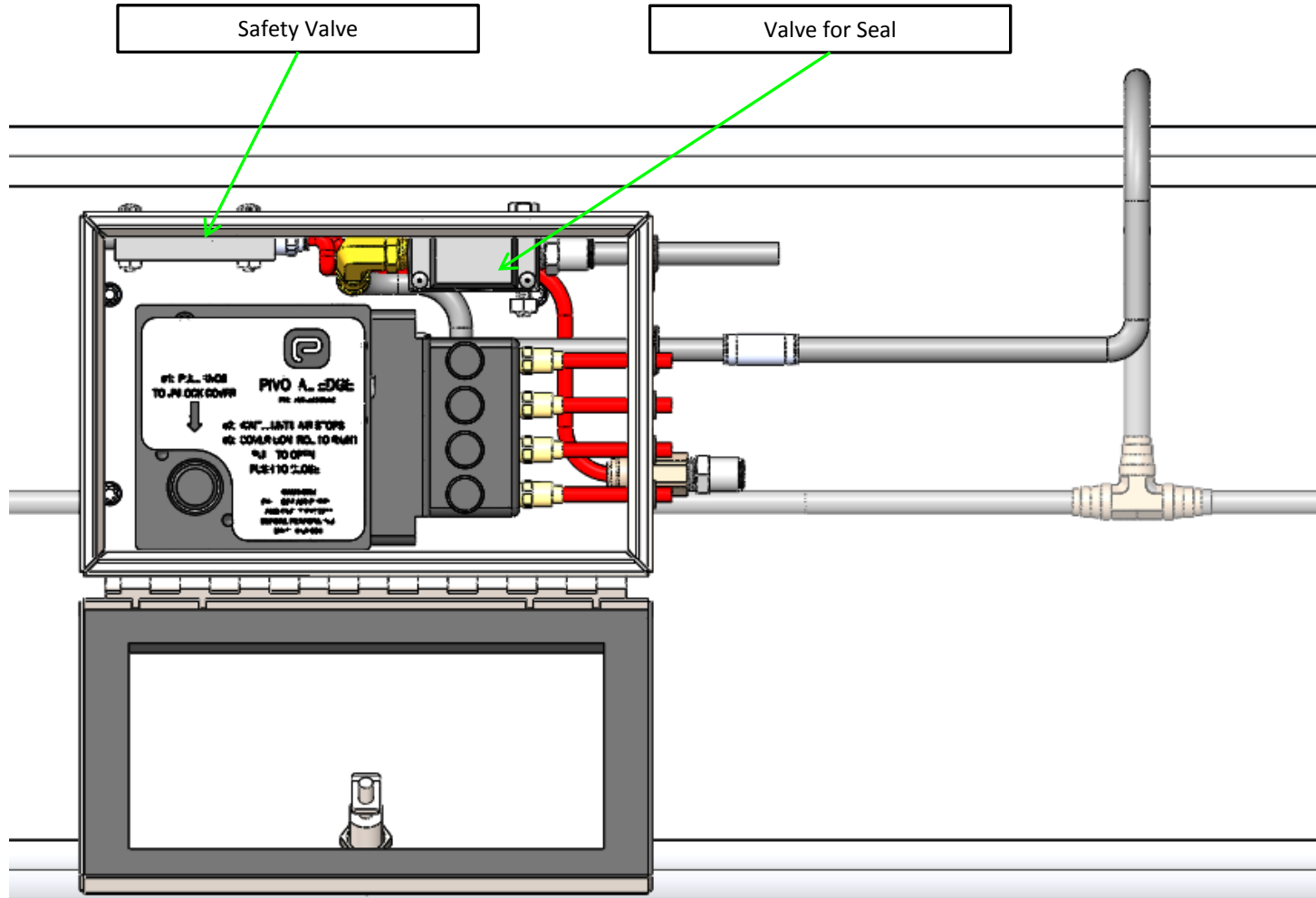


**PIVOTAL EDGE** CONTROL BOX PLUMBING -- 103900 - SAFETY  
(4 COVER INSTALL W/O AIR KNIFE)

1. "T" into truck supply as shown
2. Plumb as shown from front to back with supplied 3/8" tubeline.



REV A 04/06/17 - TITLE: MULTI SAFETY  
INSTRUCTIONS 103900



REV A 04/06/17 - TITLE: MULTI SAFETY  
INSTRUCTIONS 103900

## TOP SIDE CONNECTIONS (MULTI COVER INSTALL: 103900 - SAFETY)

